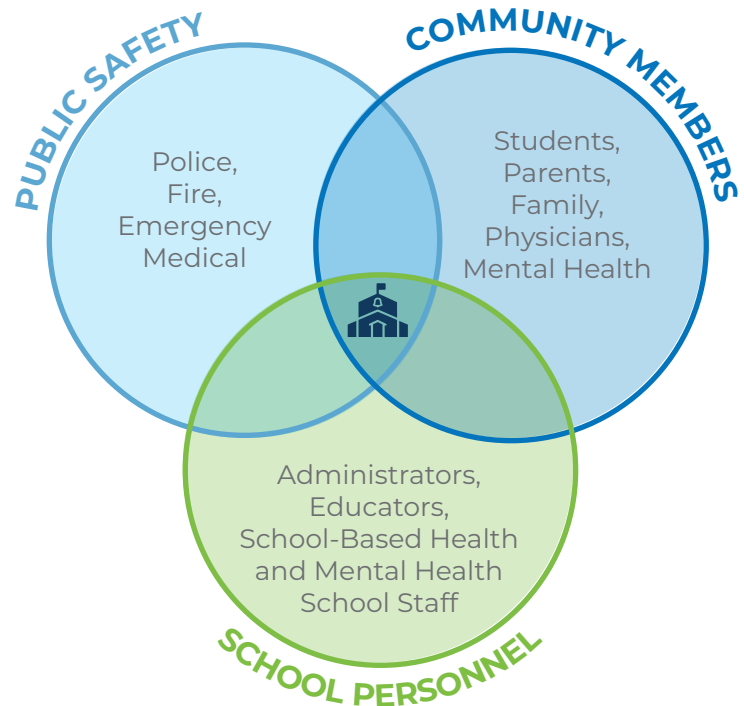


# TOOLKIT ONE: ASSESS

## SAFETY: WHO'S ON THE TEAM?



The most comprehensive assessments are likely to take into account as many perspectives as possible. While a core group of team leaders is essential to lead every school safety team, by including all school community members, these assessments uncover potential problems and develop comprehensive measures and plans to address safety. Consider the possible team members in your school community. Each will provide invaluable information and direction in your assessment.



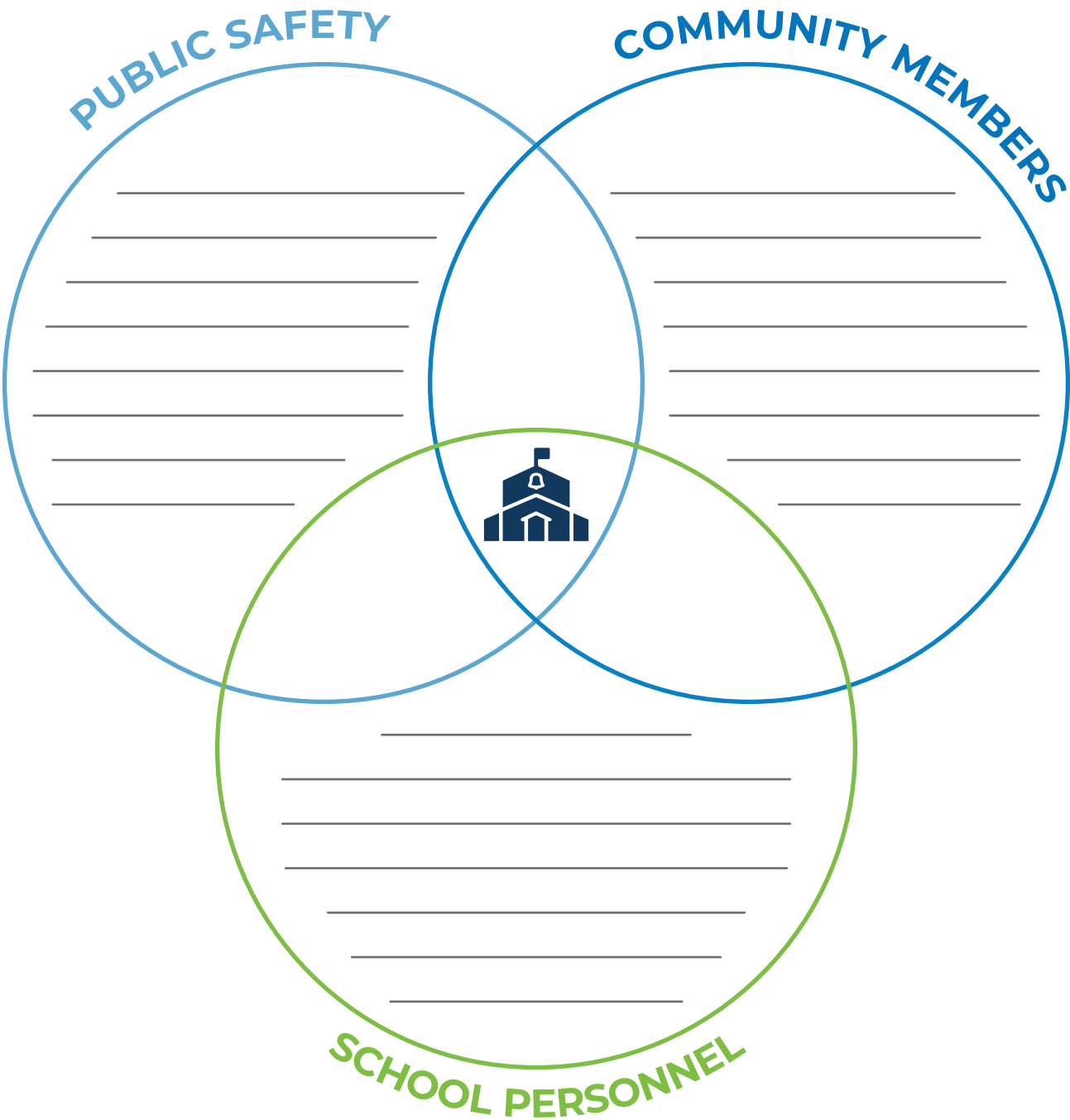
- District superintendent
- District business manager
- Security staff, district-wide and for individual schools that employ security personnel
- Facilities and maintenance staff, district-wide and at each school
- Custodial staff, district-wide and at each school
- Principals and assistant principals at each school
- Teachers at each school
- Student and student leaders
- School counselors
- School psychologists
- Responsible police, fire and EMS responders
- School architect
- District IT staff
- PTAs/PTOs
- School attorney
- Individuals who run after-school programs
- Coaches
- Bus drivers
- The administrative staff that works the front entrances
- Kitchen staff
- Cafeteria monitors/volunteers
- School nurse

# TOOLKIT ONE: ASSESS

## EXERCISE: WHO'S ON THE TEAM



Consider the human resources available to your school community at the district and building levels. Complete two versions of this chart to identify the district level safety team as well as the building level team and how they overlap to address and improve school safety.



# TOOLKIT ONE: ASSESS

## EXERCISE: WHO'S ON THE TEAM



Consider the human resources available to your school community at the district and building levels. Complete two versions of this chart to identify the district level safety team as well as the building level team and how they overlap to address and improve school safety.

